

# Aurora Playout v6.0

## Playback Control for Live Studio Production

Grass Valley™ products offer the most comprehensive, multi-format solutions for acquisition, production, storage, and playback—and a strong foundation for centralized, proactive status and activity monitoring.

As part of this broad capability, the Grass Valley Aurora™ production solution touches the entire news-production process, from acquisition, ingest, and media browsing, to quick-turn editing, craft editing, and automated playout.

The Aurora Playout system offers highly coordinated news playback from the K2™ media server/media client, Profile® XP Media Platform, and the M-Series™ intelligent video digital recorder (iVDR). Designed for workflow efficiency and flexibility, it can automatically create and adjust playlists from a MOS-compatible newsroom computer system. It also features an intuitive playback user interface and GPI inputs and outputs for remote control of playback.

### Highly Coordinated News Playback

The Aurora Playout system features integrated playback capabilities to deliver the workflow efficiencies that broadcast studio production environments demand.

With its intuitive user interface, the Aurora Playout system lets you control up to six fully mirrored K2, Profile XP Media Platform, or M-Series playout channels using manual or automatic channel assignment. Users can then manage the system's playlists manually or via a Media Object Server (MOS) protocol-compatible newsroom computing system.

For example, the Aurora Playout platform includes a MOS-compatible plug-in module so that producers and assignment editors can easily enter a story's name, desired duration, and other descriptive information. They can then drag and drop a story into a script to request playback in a rundown, either before or after the story is edited.



To streamline story creation and increase story accuracy, the Aurora Playout solution also makes its playlist available to editors using the Aurora Edit system. A list of stories to be edited is available as a simple pop-up list on an Aurora Edit station. All an editor needs to do is select a story, view its associated script, and, after editing, send it to a Grass Valley playout server system. The story's slug, ID, and duration information remains unchanged, improving accuracy and speeding story creation.

### NRCS Integration

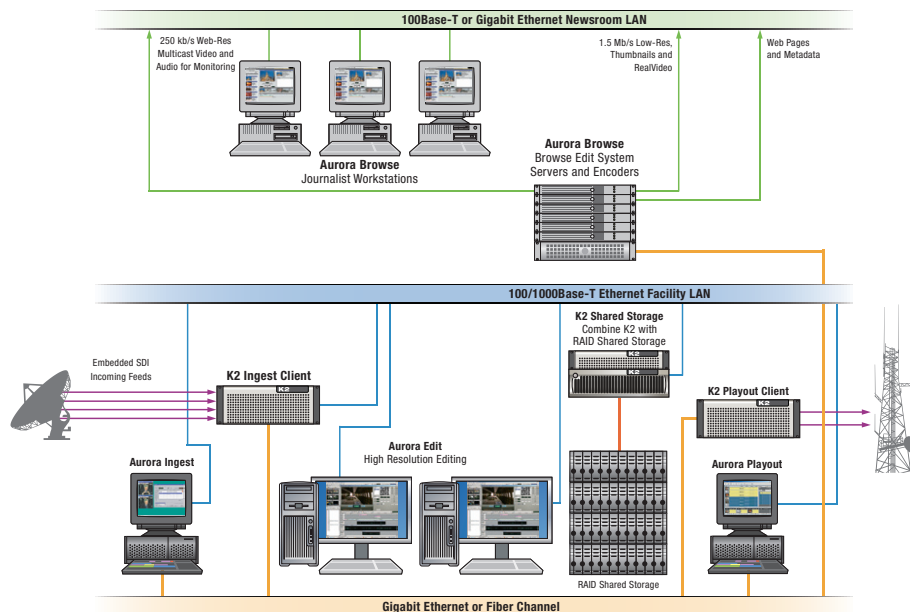
The Aurora Playout platform is compatible with newsroom control systems using the MOS v2.8 protocol, such as the iNEWS, ENPS, Octopus, and NC Power systems. And using GPI inputs, you can control an Aurora Playout system from a Grass Valley production switcher or other relay-closure type device.

### Standards-Based PC Configuration

The Aurora Playout system runs on a standard PC. This reliance on standards-based technologies allows broadcasters to leverage the cost efficiencies of rapidly evolving technologies. This approach makes upgrades easier too, typically involving a simple software upgrade or board swap.

## key features

- Up to six-channel system playlist management for K2, M-Series, or Profile XP Media Platform systems
- Manual or automatic channel assignment
- MOS newsroom computer system or manual playlist management
- Insert, move, or delete an item in a playlist without interrupting playback
- Mirrored playback of backup channels
- Quickly cue/recue next/previous stories
- Play items out of sequence when necessary
- Automatically skip items that are not ready
- Play down to start point
- Head frames displayed in playlist
- Viewable duration countdown for each story playing
- GPI triggered
- GPI triggers for external devices
- Standards-based, rack-mountable PC platform
- Part of complete Grass Valley Aurora quick-turn production solution
- Integrates with Grass Valley Aurora, NewsEdit™ nonlinear editors
- Editorial duration field for accurate timing in iNews, AP ENPS systems
- Jog/shuttle and slow/fast motion control
- Archive play with RS-422 VTR control



## Specifications

### Playback

- Control up to six playout channels (fully mirrored)
- AMP control protocol
- 32 GPI inputs and 32 GPI outputs
- Controls up to six ports (fully mirrored) in any combination of K2, Profile, and/or M-Series systems

### Aurora Edit Interface Standard Features

- Assignment list of unfinished stories
- Automatic transfer to Grass Valley server/storage systems

### Newsroom Interface Features

- Playlists from running order via MOS 2.6, MOS 2.7, or MOS 2.8 protocols
- Metadata from/to newsroom computer system via MOS 2.6, MOS 2.7, or MOS 2.6 protocols
- Plug-in to enter metadata and link to script
- ActiveX plug-ins for iNEWS, ENPS, Octopus systems

### Customer Furnished Computer\*

#### Hewlett-Packard xw9300:

- AMD Optron 270/2.0 GHz Dual-core (1st) CPU
- 80 GB SATA 3 Gb/s 7200 (1st) CPU
- Windows XP Professional
- 48X DVD-ROM/CDRW Combo
- NVIDIA Quadro NVS 285 128 MB TC PCI-E
- USB Optical Mouse
- USB Keyboard

\* Alternatively, AURORA-XRE-PC1 available for order from Grass Valley.

## Ordering Information

### AURORA-PLAY

Software, RS-422, and GPI/O for installation in customer-furnished PC (required specification above)

### AURORA-XRE-PC1

Optional Grass Valley-provided PC

## Support Services & Training

The Grass Valley Support Services & Training team delivers complete service solutions that enhance your return on Grass Valley products and global systems solutions. Advanced training and proactive support, by reducing down time, keeps your equipment and staff performing at optimum productivity and quality.

Our pre-packaged suite of SupportPRO Services provides support through the whole process:

- StartPRO Commissioning Support
- Factory, On-Site and Web Training Classes
- TechPRO On-Site and Comprehensive Software and Hardware Support
- ServicePRO Comprehensive Software and Hardware Support
- PartsPRO Advanced Exchange Hardware Support
- Critical Spares Kits for Most Products

For specific requests, our worldwide experienced Support Services & Training experts can build and assist you with customized solutions.

For more information contact your authorized Grass Valley representative or visit us online at [www.thomsongrassvalley.com/support](http://www.thomsongrassvalley.com/support).

## Headquarters

### Thomson Worldwide Headquarters

17 rue du Petit Albi – BP 8244  
95801 Cergy Pontoise Cedex  
FRANCE

[www.thomsongrassvalley.com](http://www.thomsongrassvalley.com)

DNP-2032D

© Copyright 2006 Grass Valley, Inc. All rights reserved. Printed in USA. Profile is a registered trademark and Grass Valley, Aurora, K2, M-Series, and NewsEdit are trademarks of Grass Valley, Inc. All other tradenames referenced are service marks, trademarks, or registered trademarks of their respective companies. Specifications subject to change without notice.

### Digital News Production

10 Presidential Way, Suite 300  
Woburn, MA 01801  
U.S.A.

## Sales and Technical Support Numbers

### North America

Sales/Support +1 800 547 8949  
+1 530 478 4148  
Fax +1 530 478 3347

### Latin America

Sales +1 305 477 5488  
Support +1 530 478 4148  
Fax +1 305 477 5385

### Pacific

Sales +852 2531 3000  
Support +852 2531 3056  
Fax +852 2802 2996

### Rest of the World

Sales +33 (0) 1 34 20 70 00  
Support +800 80 80 20 20  
(West/North Europe only)  
+33 (0) 1 48 25 20 20  
(East Europe, Middle East, Africa)  
Fax +33 (0) 1 34 20 70 47